

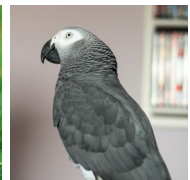
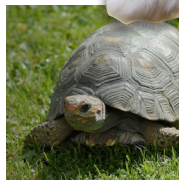
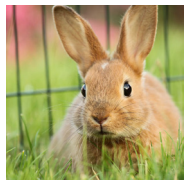


APBC

ASSOCIATION OF PET  
BEHAVIOUR COUNSELLORS

AN INVITATION TO

JOIN  
THE  
APBC



# Interested in Working in the Field of Animal Behaviour? An Invitation to Join us at the APBC

**The Association of Pet Behaviour Counsellors is a supportive organisation to those working with or wishing to work with animals as Animal Behaviour Technicians or Clinical Animal Behaviourists at a highly regarded standard.**

Established for over 30 years, the APBC has worked closely with the veterinary profession and the entire animal industry and is known as the flagship organisation within the field of animal behaviour. The APBC is also a founding member of the Animal Behaviour and Training Council.

Due to maintaining high standards of practice throughout its existence, the collective reputation of APBC members is second to none. Consequently, other professions, particularly veterinary and legal specialties, are more likely to call upon APBC members when they need the services of an animal behaviour counsellor. This generates employment in the field of animal behaviour counselling as well as in associated areas such as lecturing, writing and legal issues.

## **WE ARE A CAB AND ABT ASSESSOR ORGANISATION**

Our new Clinical Animal Behaviour and Animal Behaviour Technician assessment processes are run by a dedicated assessment sub-committee who will support you on your journey to full accreditation.

## **WHO IS WELCOME TO JOIN?**

We are open to all who have achieved or who are in the process of achieving a relevant qualification from FHEQ level 4 and are looking to progress to level 5 and above. We have membership levels to welcome and support you all. We support members who work with dogs, cats, horses, reptiles, small furrries, birds and everything in-between. We even have members who work with pigs, sheep, other livestock and zoo animals.

## **BENEFITS OF JOINING US AT THE APBC FOR ALL MEMBERS:**

- We welcome international members.
- Significant discounts on public CPD events including webinars, conferences and access to member-only events.
- Full and Provisional members can contribute to a financially attractive insurance scheme which provides members with comprehensive public liability, professional indemnity and more (includes working with horses).

- Social media campaigns promoting our members own businesses, social media pages, achievements, events and news.
- Client ability to claim consultation fees from Full Members with most of the leading UK pet insurance companies.
- Regular remote support sessions with the committee to promote communication within the APBC.
- Networking opportunities.
- Collaborative opportunities with corporations, charities and veterinary businesses.
- Investment in veterinary events and conferences.
- Access to Journals: Anthrozoos, Applied Animal Behaviour Science, Journal of Veterinary Behavior

**We know our profession has challenges which can be psychologically distressing. We support our members with:**

- Members-only confidential support groups to discuss cases and specific challenges, benefitting from the collective knowledge, moral support and understanding of our colleagues.
- Members-only online discussion group to exchange up-to-date information, business development and for moral support.
- Access to an external 24/7 helpline to discuss legal, financial, medical and any other private or personal matter (other than employment law).
- Access to a wellbeing and support app to help support you and your family in all mental health matters.
- 6 external counselling sessions, per mental health concern per year per member, for any reason with qualified CBT and EMDR counsellors.

**INTERESTED IN KNOWING MORE ABOUT US?**

Contact Kate at [info@apbc.org.uk](mailto:info@apbc.org.uk) or visit [www.apbc.org.uk/become-a-member](http://www.apbc.org.uk/become-a-member)

**Signed on behalf of the APBC Committee**



**Anne McBride**  
Chairperson

*We look forward to welcoming you*



**APBC**

ASSOCIATION OF PET  
BEHAVIOUR COUNSELLORS

**Association of Pet Behaviour Counsellors**

[www.apbc.org.uk](http://www.apbc.org.uk) E: [info@apbc.org.uk](mailto:info@apbc.org.uk)

**ABTC**

MEMBER ORGANISATION